

UK Assembly instructions.
 Please read the instructions first. We reserve the right to change product specifications due to possible technical improvements.
Caution : Always use appropriate fixings to suit your type of wall.
 Coat all cut areas with moisture resistant sealant to prevent ingress.

CLEANING INSTRUCTIONS

Furniture surfaces **MUST ONLY** be cleaned using a damp cloth with warm water. Excessive wetting **MUST BE** avoided and any spills should be removed immediately

ENVIRONMENT

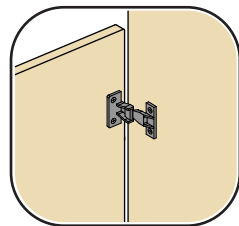
Excessive condensation should be avoided

GUARANTEE

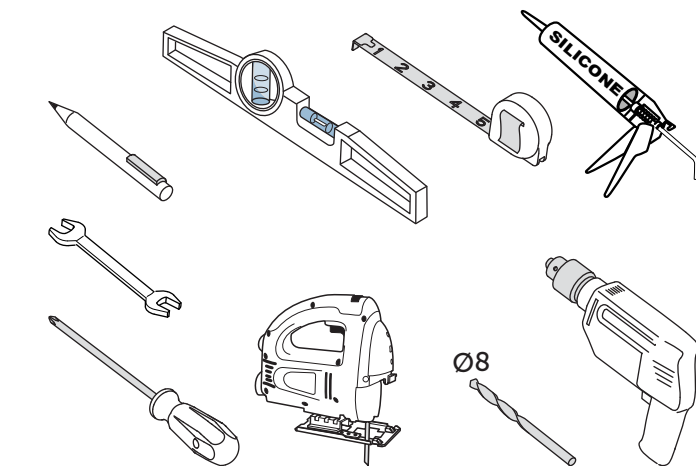
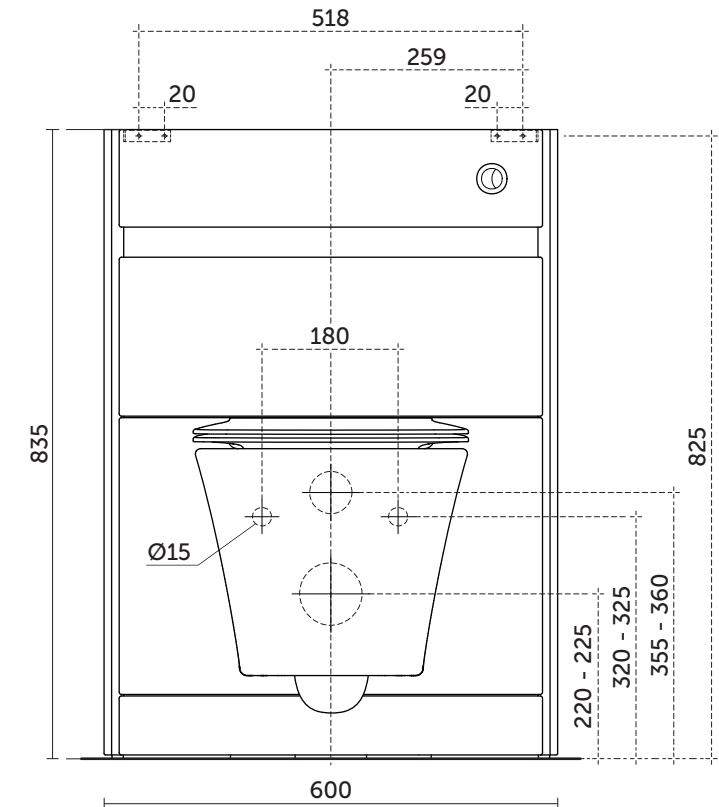
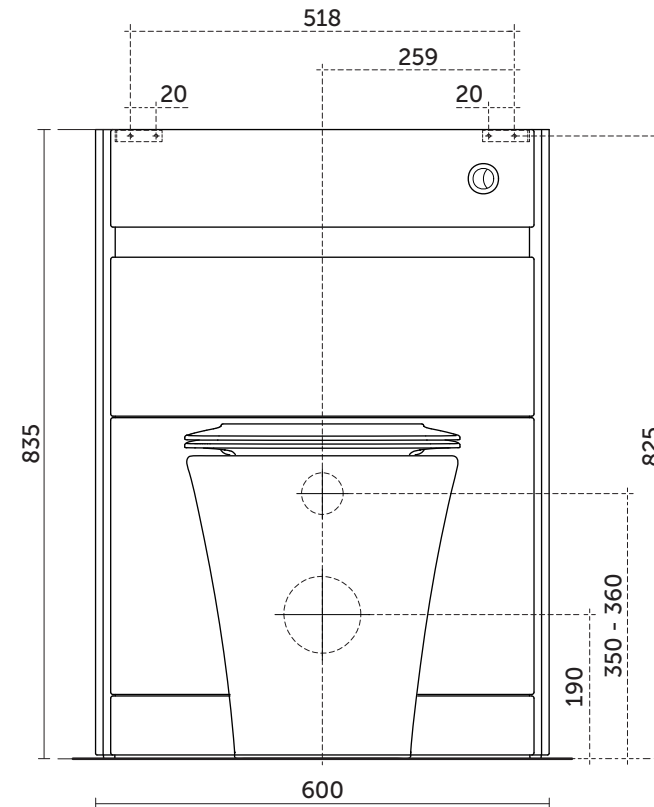
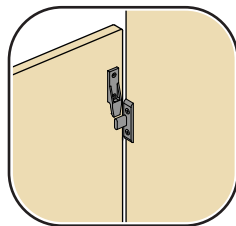
Guarantee is void if the furniture is not installed in an adequately ventilated/heated bathroom

IMPORTANT - If installing unit with wall hung pan - replace bottom panel "Lift-on" clips with loose "Push-on" clips supplied

"Push-on" clips

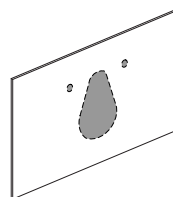


"Lift-on" clips

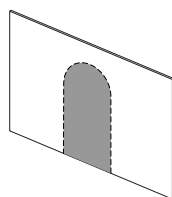


This instruction should be used in conjunction with instructions supplied with component parts.

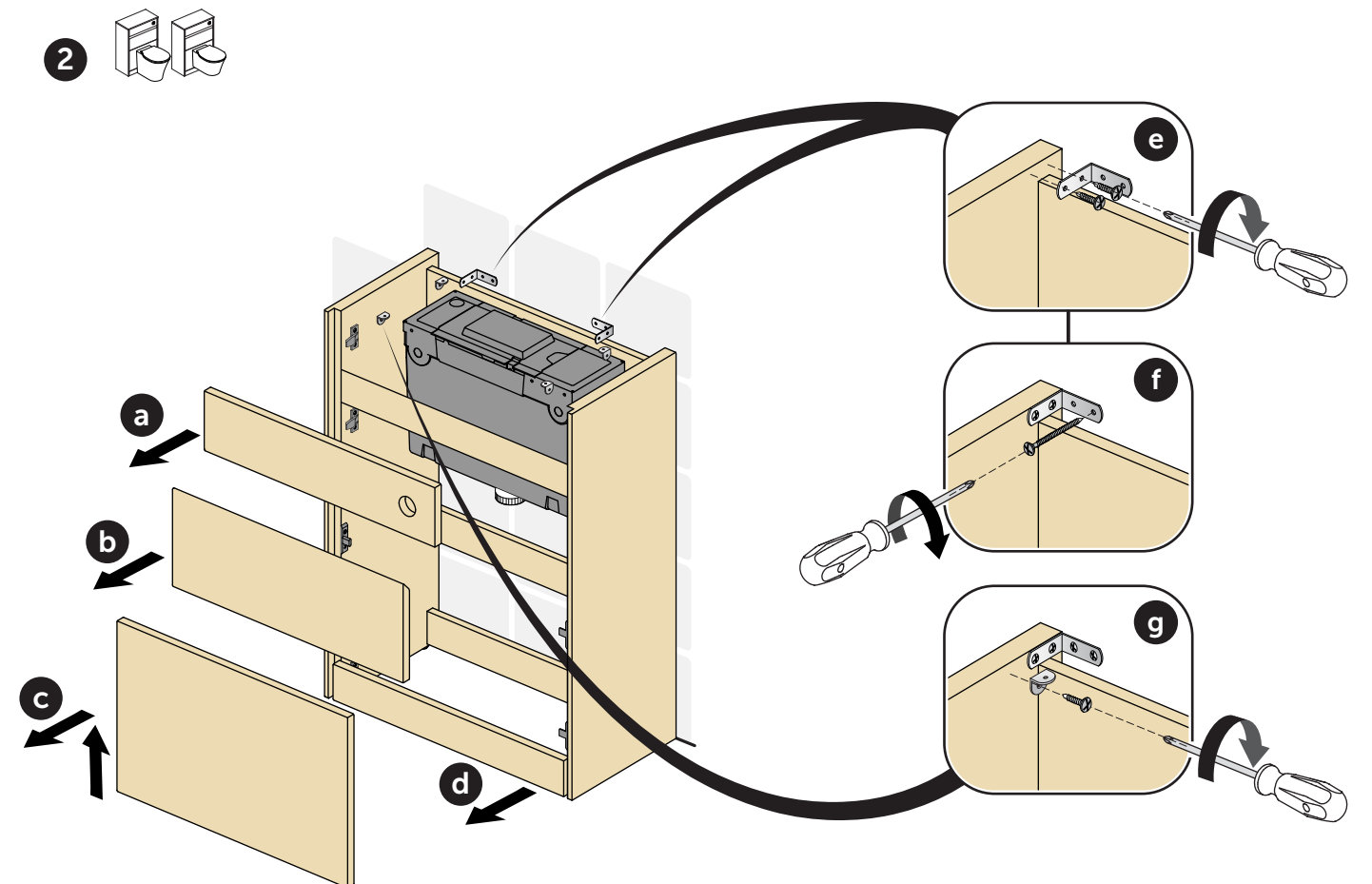
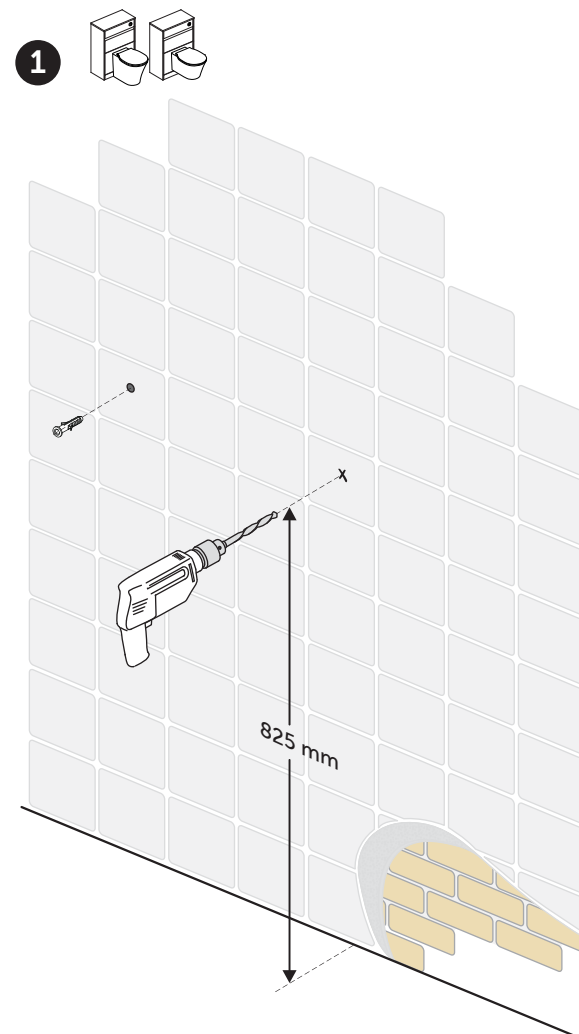
Type of cut-out required in lower panel will be dependent on the closet being installed.



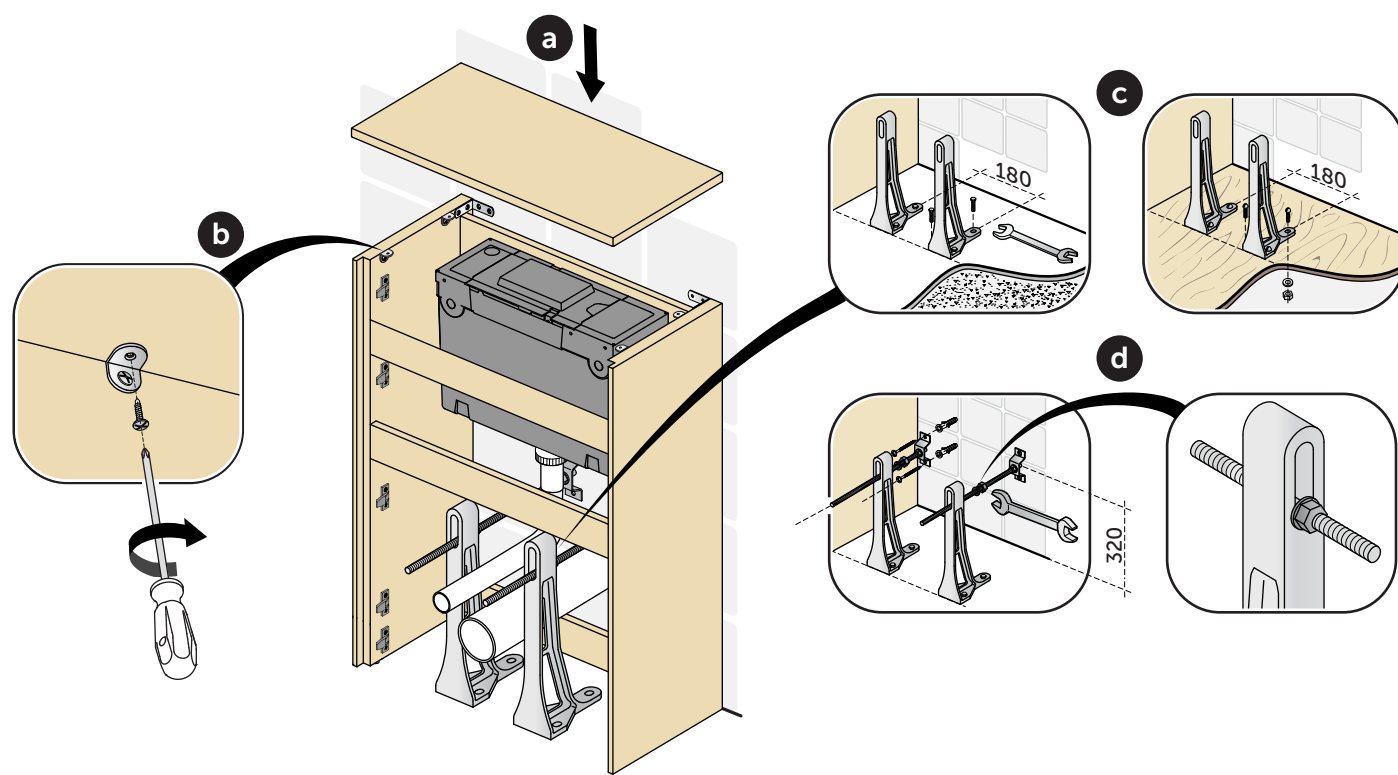
Wall hung option typical cut-out detail



Back to Wall option typical cut-out detail

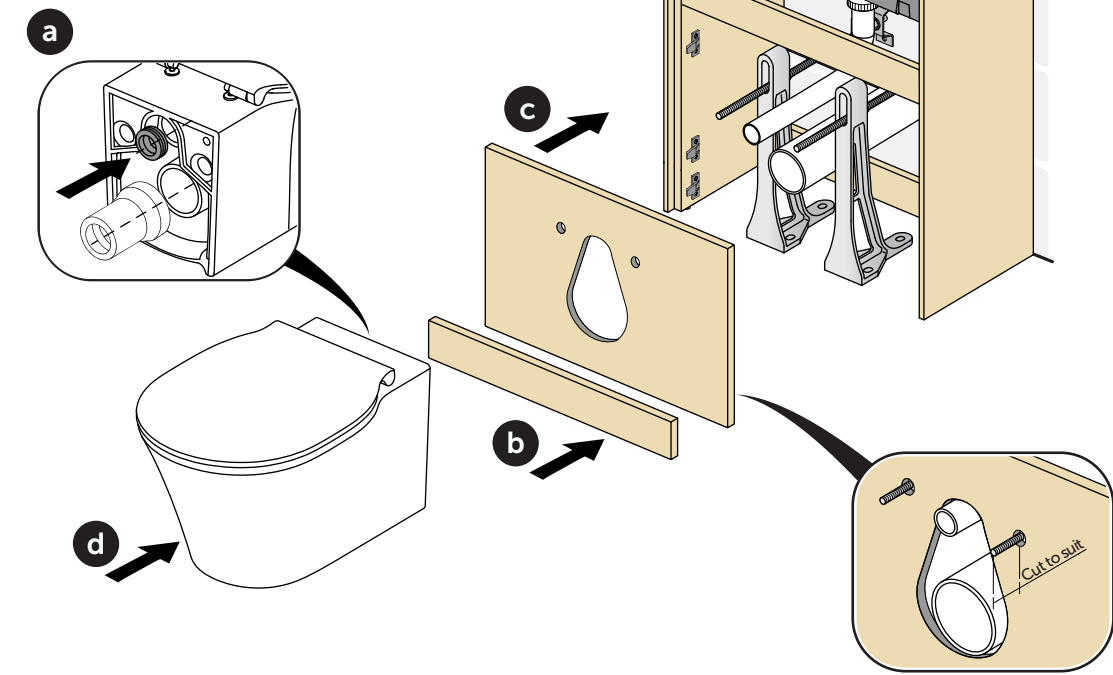


3



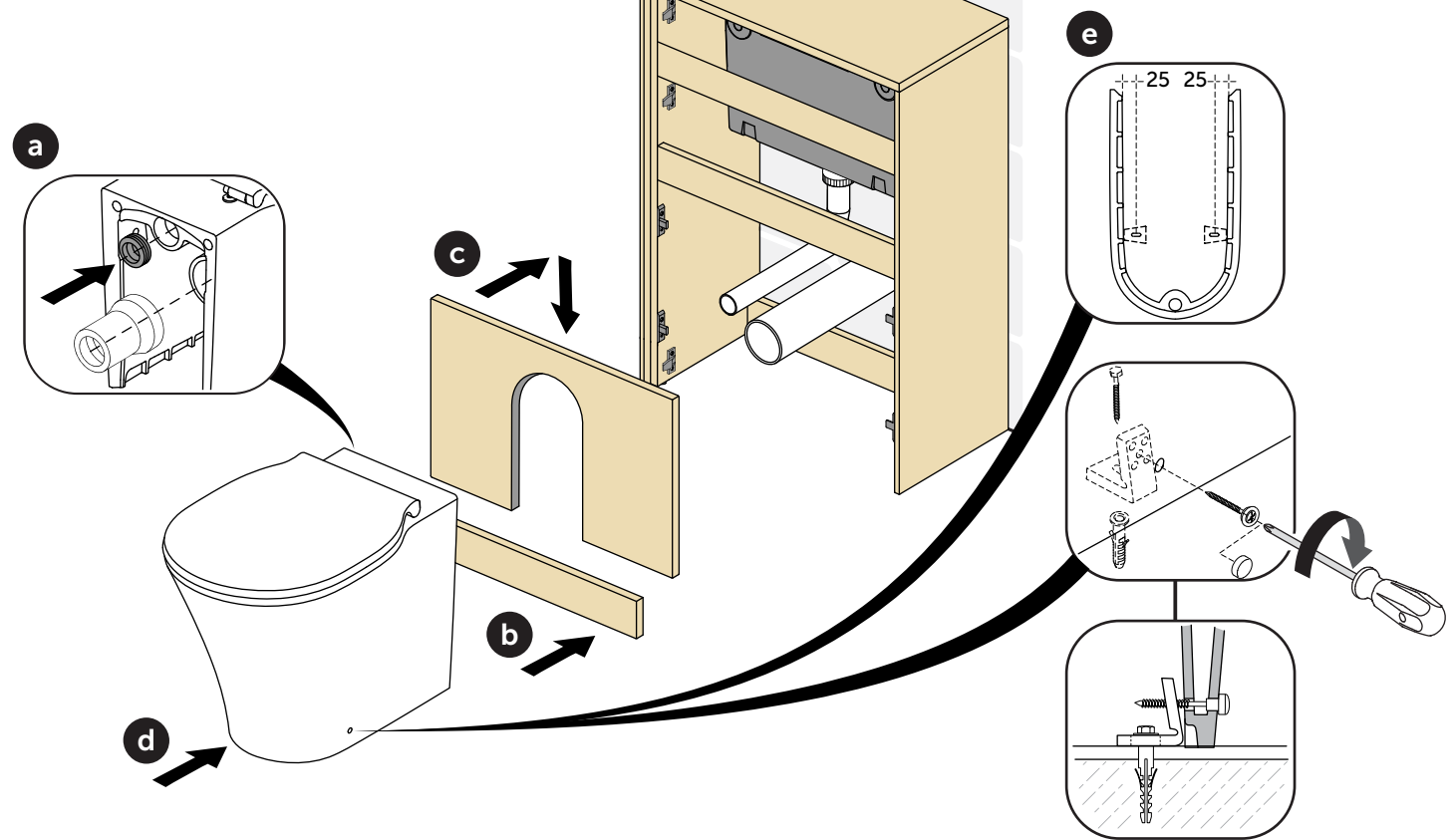
4

See Closet instructions for installation



5

See Closet instructions for installation



6

PRODUCT SHEET

Types of materials

- Basin unit, column, worktop, drawer panel: MFC class E1 – MDF
- Drawer frame & runners: steel
- Collar: plastic
- Hinges: steel with Soft-closing
- Hanging bracket & fixing plate: steel
- Shelf: glass 6 mm
- Finishes: gloss-matt lacquered / melamine double-faced

Safety

- Do not place more than a 2 Kg load on each shelf
- Do not apply pressure of more than 15 Kg on open drawers
- Incorrect installation and/or use of the item for any purpose other than that for which it was intended can be dangerous or cause possible injury to users.
- When cleaning or using the bathroom, please take care for all furniture having integrated lights or other electric parts, to avoid direct contact with water or moisture.
- The products should be installed in a bathroom with adequate ventilation.

Maintenance and Cleaning

- Wipe down with a damp cloth or a gentle detergent and dry carefully.
- Do not use any solvents or abrasive substances for cleaning. Spilt liquids must be wiped up immediately using a cloth; thereafter, dry the surface with a clean dry cloth.

Product life-cycle

At the end of its useful life, entrust the unit to the local waste disposal company.

National Avenue
Kingston-upon-Hull
HU5 4HS, England
Customer care line:
Tel.: +44 (0)1482 496 318
Fax: +44 (0)1482 499 902