

Intellimix®
Hygiene. Redefined.



Ideal Standard

TOGETHER FOR BETTER

**Over 100 years
of hygiene heritage.
And counting.**

The daily practice of hygiene is exactly that, something which should improve day after day. At Ideal Standard, we're incredibly proud to have played a leading role in that daily improvement for more than a century.

Today, we're more aware than ever of the need to keep raising standards and creating new solutions that deliver superior hygiene. Through our research and industry-leading products, we make it possible to deliver safer, better, washroom experiences.

Shaping the future of modern living, together.





Intellimix® — Deck mounted, Chrome / Conca — Basin 100cm / Conca — Mirror 80cm

INTRODUCING INTELLIMIX®

Hygiene. Redefined.

Rising to the challenges of the modern world, calls for a new definition of hygiene. That’s why we created Intellimix® – a smart touchless tap that dispenses both water and soap. It encourages users to always wash with soap, which the World Health Organisation recommends as one of the most important measures we can take to avoid contracting and spreading infections.

Intellimix® doesn’t just deliver superior hygiene, though – it also reduces running costs, improves sustainability, and even makes maintenance simple thanks to the Intellimix® app.

| SUPERIOR HYGIENE | LASTING SAVINGS | NEXT-GEN SUSTAINABILITY | DESIGNED FOR BETTER |
|---|--|--|--|
| Limit the spread of harmful bacteria with touch-free handwashing that encourages soap use every time. | Reduce your running costs with lower maintenance needs and by saving on water and soap with every use. | Reduced water and soap consumption over the lifetime of the product. | Sophisticated design, finish options and customisable digital display. |
| P.08 | P.14 | P.18 | P.20 |



Intellimix® — Deck mounted, Chrome / Extra — Double basin 120cm
Conca — Mirror 120cm

SUPERIOR HYGIENE

When soap meets water

We all know that proper handwashing technique protects people from infection and reduces illness and absenteeism. What's less known is that proper handwashing doesn't come naturally to people.

The World Health Organisation recommends using soap and scrubbing for at least 20 seconds to protect our health. Intellimix® makes correct handwashing a certainty, by delivering a programmable amount of soap and water in a complete, timed wash cycle.

30%

of people don't use soap when washing their hands, after visiting the toilet.

80%

of the most common diseases are transmitted by touch.

95%

of people don't use soap or enough water, enabling germs to spread more easily.



DIGITAL HANDWASHING CYCLE

100% soap washes



SUPERIOR HYGIENE

Where innovation meets intuition

Our technologists work tirelessly to push the boundaries of what's possible when it comes to design, engineering and invention.

Add to this our deep knowledge of users' needs and behaviour, and you have a solution that not only works, but works for everybody.



TOTALLY TOUCHLESS

Intellimix® automatically delivers water and soap when a user puts their hands under the tap. The screen then explains what is happening, and how to follow the wash cycle.



100% SOAP WASHES

Intellimix® Mild Antibacterial Foam Soap is automatically dispensed as part of the washing cycle. This ensures better hand hygiene with every wash.



STAGNATION PROTECTION

A periodic hygiene flush is triggered automatically after a set time, rinsing the pipes to safeguard against bacteria growth.



IDEALBLUE®

A separate water tube ensures there is no contact between the water and the brass body of the tap – keeping the water nickel and lead free, in line with drinking water regulations. The small diameter let's the water flow faster – preventing the build-up of bacteria.





SUPERIOR HYGIENE

A soap with
a difference

A UNIQUE
FORMULA

Intellimix® Mild Antibacterial Foam Soap is our own formula created to ensure perfect hygiene while being gentle to even the most delicate skin.

Irritant-free and with a rich, thick texture, it offers a luxurious handwashing experience every time.

TRIED &
TESTED



Vegan and
cruelty free.

No fragrance, colourants,
EO/PEG, sulphates,
or microplastics.

100% naturally
derived surfactants for
a gentle hand-wash.

KIND TO YOUR SKIN,
GOOD FOR THE PLANET

Intellimix® Mild Antibacterial Foam Soap comes in a recyclable 1250ml bottle which is easy to replace in two simple steps, without the use of tools.

The soap can be conveniently ordered through our web-shop at shop.idealstandard.com.



LASTING SAVINGS

Cost control, made effortless

Proper hand hygiene is priceless for individuals, and for business. With Intellimix® you can have all the personal benefits, and save on your running costs, too.

Intellimix® compared to standard taps with 5.8 l/min flow rate

Timings based on World Health Organisation handwashing cycle

| Product | Flowrate | Wet your hands for 5 seconds | Lather and scrub for 20 seconds | Rinse for 10 seconds | Water usage sec/l | Water saving |
|----------------|----------------|------------------------------|---------------------------------|----------------------|-------------------|--------------|
| Manual mixer | 5.8 litres/min | 5 sec flow | 20 sec flow | 10 sec flow | 35 sec 3.38 l | 0% |
| Infrared mixer | 5.8 litres/min | 5 sec flow | 0 sec flow | 10 sec flow | 15 sec 1.45 l | 57% |
| Intellimix® | 2 litres/min | 5 sec flow | 0 sec flow | 10 sec flow | 15 sec 0.5 l | 85% |

 **SAVE UP TO 80% ON SOAP**

Intellimix® mixes soap with air to create a soft foam that is not only pleasant on the skin, but is also economical. The soap volume can be adjusted via the App to give total control to the owner and so they can monitor how much is used. The soap is dispensed from a long life pump that has a tested lifespan of over 500.000 cycles.

 **SAVE UP TO 85% ON WATER**

Intellimix® uses 85% less water when compared with standard single lever taps, when following the washing cycle recommended by the WHO.

The 2 l/min flow limiter and programmable water flow timing bring significant cost savings as the table below shows.



SAVE ON PHYSICAL MAINTENANCE

Intellimix® saves hours of work, especially in larger buildings with multiple washrooms. EasyFix™ enables effortless installation, saving time and money on the initial set up. Plus, with no more dripping soap dispensers, Intellimix® means reduced cleaning time and costs.

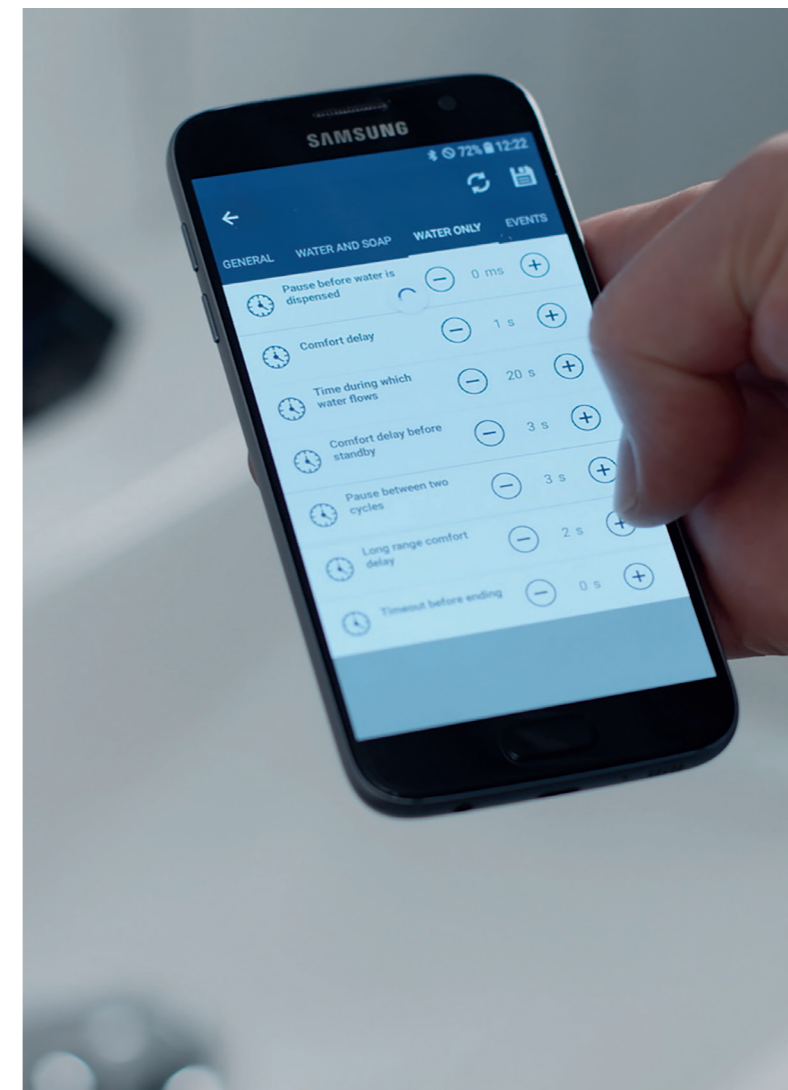
Intellimix® — Deck mounted, Black Onyx / Connect — Undercounter top basin 50cm



MANAGE RESOURCES EFFORTLESSLY

Intellimix® makes controlling resources simple with its bespoke app for Android and iOS. You can adjust parameters such as soap settings and the handwash cycle to meet changing needs, and control the frequency of the automatic hygiene flush.

You can also monitor performance and receive alerts when supplies are low – all helping to make significant savings on water and soap.



NEXT-GEN SUSTAINABILITY

Higher standards

Sustainability is more than a box to be ticked. It's a promise to keep. Intellimix® helps you keep that promise, by prioritising sustainable resource management.

As would be expected, Intellimix® meets the requirements of LEED and BREEAM certifications.

With smarter soap use, fewer chemicals make their way into the water supply and the costs and impact of cleaning is reduced. Significant water savings, along with the option to switch to cold water hand washing, mean sustainability isn't just a buzzword. It's a reality.

DESIGNED FOR BETTER

Clean hands, clean design

Every product we create is designed with the user in mind. Intellimix® is a modern, elegant, and effortless solution that elevates its surroundings and results in a better-than-ever washroom experience.

Intellimix® has won awards in recognition of its design and advanced technology including the international design prize Red Dot and the IF Product Design Award.



Intellimix® — Deck mounted, Chrome / Conca — Basin 100cm



reddot winner 2021



DIGITAL SCREEN

Intellimix® uses its screen to share clear instructions, so users understand how to use the tap and get the best experience. It can also be programmed to show your logo.

DESIGNED FOR BETTER

Intellimix® Black Onyx

Intellimix® doesn't just transform your washroom through innovation. In a sleek Black Onyx colour way, it also creates a bold, impactful look so you can deliver the latest in design, as well as the latest in technology.

To guarantee quality and higher scratch resistance the Black Onyx models are coated with a thin film of PVD – a state-of-the-art process creating a molecular bond to the tap resulting in the most durable finish available today.

For a more classic style, you can also choose a chrome finish.

Both are available as deck mounted fittings, with panel mounted models coming soon.



- Key
- Totally touchless
 - Integrated soap dispenser
 - Water saving
 - Sustainable
 - EasyFix™ installation
 - App compatibility
 - Automatic hygiene flush

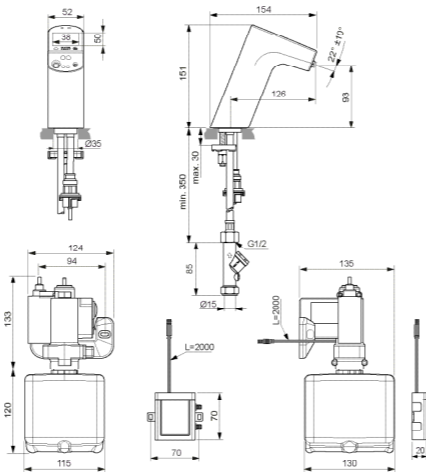
Intellimix®
Smart Soap Integrated Sensor Tap
Chrome finish
A7512AA



Intellimix®
Smart Soap Integrated Sensor Tap
Black Onyx finish
A7512B3



Touch-free and soap integrated hand washing
Without hot and cold water mixing
Suitable for connection with individual thermostat AA5900AA (to be purchased separately)
Integrated soap outlet for Intellimix® Mild Antibacterial Foam Soap
Product is only for use in high pressure systems (min. 0,5 bar)
Integrated solenoid valve
Saves water thanks to a flow limiter 2 l/min
TFT animated display for intuitive mixer use (with additional personalisation option)
Intellimix® meets all standards for materials in contact with drinking water
EasyFix™ for quick and effortless installation
Standard fixation with flexible hoses G1/2" PEX to reduce bacteria growth
Programmable automatic hygiene flush
Programmable automatic rinse for soap
Easy parameter setting through app
Easy data check through app



Intellimix® Mild Antibacterial Foam Soap

1.25L x 6 Packs
A7711NU

1.25L x 240 Packs
A7714NU

1.25L x 120 Packs
A7713NU

Bespoke Intellimix® formula
1250ml recyclable bottles
Mild formula for gentle cleansing
100% naturally derived surfactants
Free from fragrances, colourants and alcohol
Free from EO/PEG and sulphates
Vegan and cruelty free
Free of microplastic
The soap can be conveniently ordered through our web-shop at shop.idealstandard.com.



Power supply
elongation 2m
A960635NU



15mm TMV
thermostatic mixing valve
A5900AA



Silhouette
3000mm
S062801



5 person wash trough with trap

Silhouette
2400mm
S062701



4 person wash trough with trap

Silhouette
1800mm
S062601



3 person wash trough with trap

Silhouette
1200mm
S062501



2 person wash trough with trap

Together we positively impact the future of modern living. Together we think bigger. Together we establish the rules for considered design. Together we bring emotion to functional perfection. Together we form enduring partnerships. Together we meet the needs of all generations. Together we shape the future of the category we have defined.

Together for Better.





Ideal Standard

Ideal Standard Ireland

2nd Floor, 3013 Lake Drive
Citywest Business Campus
Dublin 24 YXW2

+353 1 456 4525

WWW.IDEALSPEC.CO.UK